

Bay Area Quilt Guild Scrap Exchange

General Instructions

1. Use only good quality 100% cotton fabric and thread. Pre-wash all fabric.
2. Seams must be an accurate $\frac{1}{4}$ " - please measure your own blocks in stages and the completed blocks before turning in.
3. If you choose to make more sets than the minimum required per instructions, each new set must be done in different fabrics. Label each additional pinned group as #2.
4. No duplicates in a pinned group unless stated in the instructions.
5. No IOUs.
6. Press blocks from the back first to make sure seam allowances are going the correct direction, then press the front to check for accuracy of points. Trim all threads and clip nubs. DO NOT trim block or square it up...as this cuts off points.
7. Pin blocks into groups according to the instructions and label each pinned group with your name and phone number. Place labeled pinned groups in a large baggie and label the outside with your name, phone number and the number of pinned groups traded. Remember one pinned group per person goes to the guild.
8. If you stitch blocks to trade together instead of pinning, please use ONLY 2 or 3 large basting stitches. DO NOT stick name labels to blocks, please use pins or basting stitch.

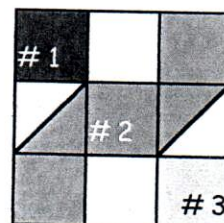
Terminology: SET - all blocks from the same fabric

PINNED GROUPS - one block from each SET for maximum variety - no repeats

STASH BUSTERS

Winding 9-Patch

- BLOCK SIZE:** 6" finished (6 1/2" unfn.)
- DUE DATE:** Tuesday, February 27, 2024, Fabrics Etc box
- MEETING DATE:** Tuesday, March 5, 6pm before Guild meeting
- NUMBER OF SETS:** 4 different Winding 9-Patch blocks each consisting of 16 blocks
- PINNED GROUPS TO TRADE:** 16 pinned groups each consisting of 4 different Winding 9-Patch blocks
- FABRICS:** BATIK PRINTS and Muslin tone on tone (no color, just off white tone on tone) for the background fabric. Avoid large multicolor Batiks (especially #2) that won't "read" the same when cut and sewn. See Swatches.
- FABRICS NOT TO USE:** NO SOLIDS, Prints - BATIKS only.
Background fabric - no white or tans.



6" finished
(6 1/2" unfn.)

Yardage needed for 1 SET (16 blocks) - Repeat a total of 4 times with different fabrics:
All strips are cut WOF, approx 40" long.

Background - Muslin tone on tone - 1/2 yard

Batik # 1 - One 2 1/2" strip

Batik # 2 - 1/2 yard

Batik # 3 - One 2 1/2" strip

Please read all instructions carefully before starting. All instructions include a 1/4" seam allowance and strips are cut from selvage to selvage WOF. Do NOT trim blocks.

Instructions for 1 SET (16 blocks). Repeat a total of 4 times for 64 blocks.

1. Cut the following:

Batik # 1 - Cut (1) 2 1/2" strip

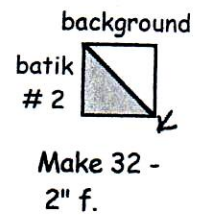
Batik # 2 - Cut (3) 2 1/2" strips. Use one strip and subcut 16 - 2 1/2" squares

Batik # 3 - Cut (1) 2 1/2" strip

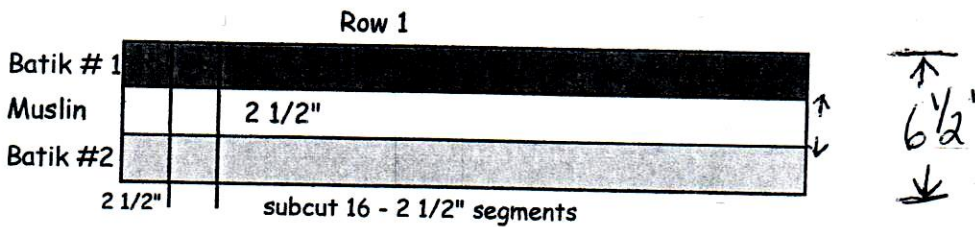
Background (Muslin tone on tone) - Cut (2) 2 1/2" strips

2. Use 2" finished Half Square Triangle Papers on a Roll or Thangles, pair Muslin background fabric and BATIK # 2. Make 32 - 2" finished (2 1/2" unf.) Half Square Triangles. Press toward the batik and clip excess tips for clean blocks.

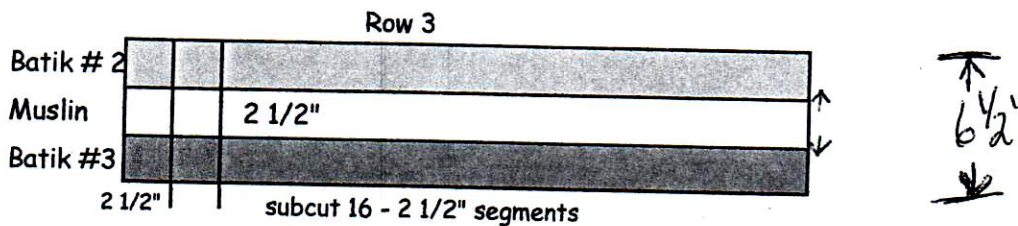
*** If NOT using papers on a roll, CUT 16 - 2 7/8" squares from both Background and Batik #2. Draw a diagonal line on the backside of all background squares. Pair with Batik #2, right sides together. Stitch 1/4" on both sides of the drawn line, Cut on the line and press toward the batik. Clip excess tips.



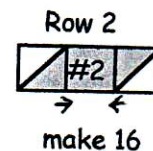
3. Sew Batik #1, Background/Muslin, Batik # 2 - 2 1/2" strips side by side, press toward the batik strips for ROW 1. Subcut 16 - 2 1/2" segments.



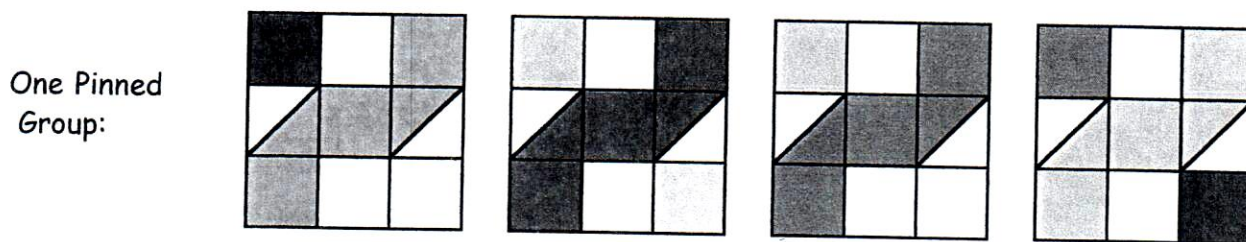
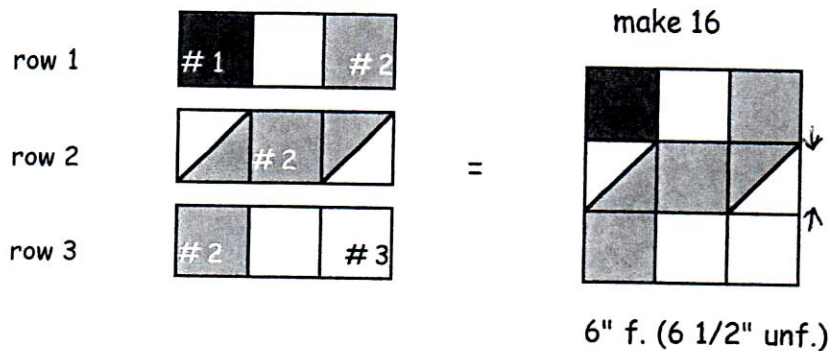
4. Sew Batik #2, Background/Muslin, Batik # 3 - 2 1/2" strips side by side, press toward the batik strips for ROW 3. Subcut 16 - 2 1/2" segments.



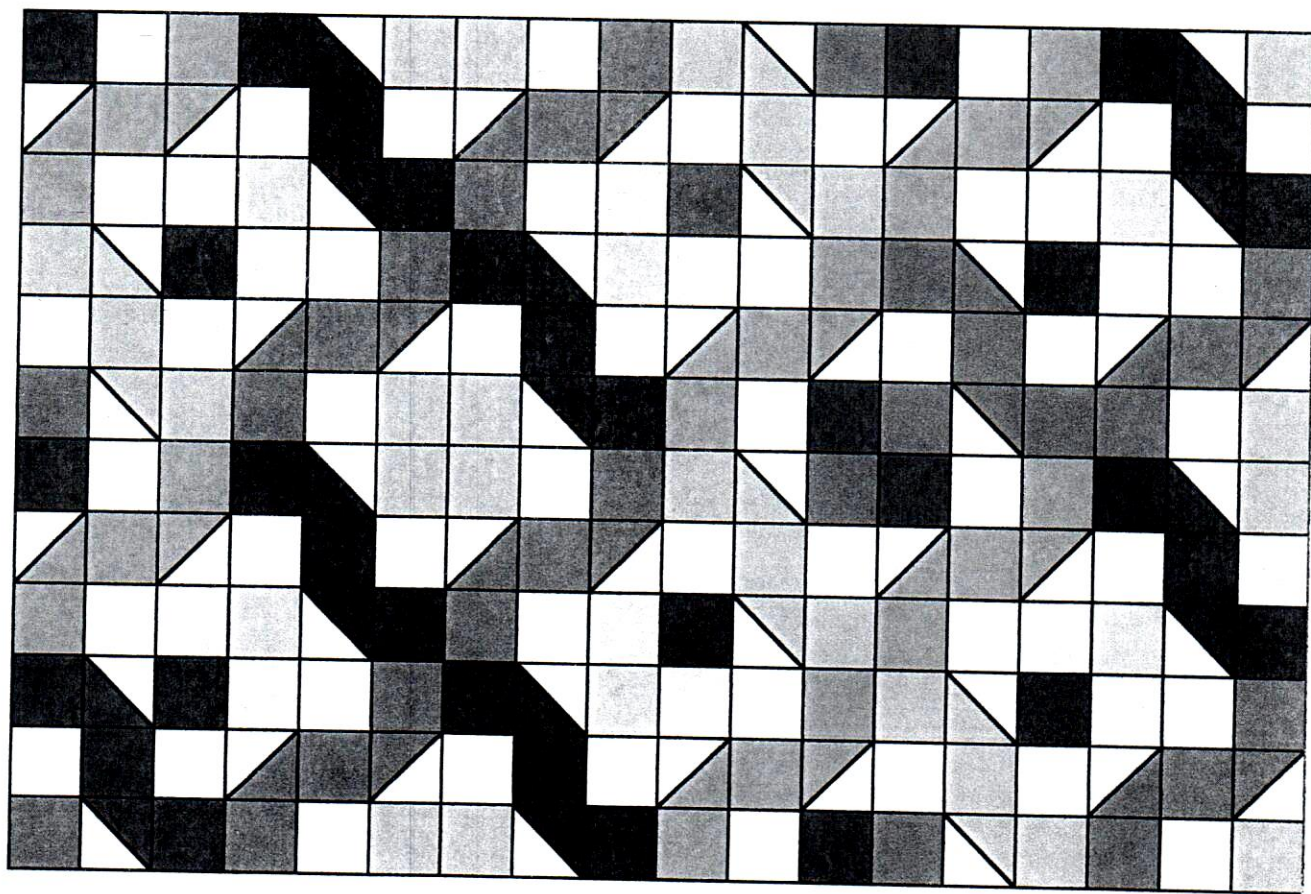
5. Make 16 Row 2 by sewing a HST, Batik #2 - 2 1/2" square and a HST according to the drawing. Press toward the center square.



6. Sew blocks together by rows according to the diagram. Seams should be going in opposite directions for fine points. Make 16 - 6" finished blocks (6 1/2" unf.) Arrows indicate pressing direction.



Suggested setting:



FABRICS:

