

# Bay Area Quilt Guild Scrap Exchange

## General Instructions

1. Use only good quality 100% cotton fabric and thread. Pre-wash all fabric.
2. Seams must be an accurate 1/4" - please measure your own blocks in stages and the completed blocks before turning in.
3. If you choose to make more sets than the minimum required per instructions, each new set must be done in different fabrics. label additional pinned groups as # 2.
4. No duplicates in a pinned groups unless stated in the instructions.
5. No IOU's.
6. Press blocks from the back first to make sure seam allowances are going the correct direction, then press the front to check for accuracy of points. Trim all threads and clip all nubs. Do NOT trim the block or square it up.
7. Pin blocks into groups according to instructions and label each pinned group with your name and phone number. Place labeled pinned groups in a large baggie and label the outside with your name, phone number and number or groups traded. Remember one pinned group per person goes to the Guild.
8. If you stitch blocks to trade together instead of pinning, please use only 2 or 3 large basting stitches. Do Not stick name labels to blocks, please use pins or basting stitch.

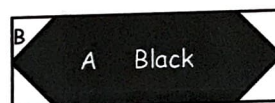
TERMINOLOGY: SET - all blocks from the same fabrics

PINNED GROUP - one block from each SET for maximum variety - no repeats

## STASH BUSTERS

**BLOCK SIZE:** 2 1/2" x 10" finished (3" x 10 1/2" unf.)  
**DUE DATE:** Tuesday, March 27, 2018 Fabrics Etc box  
**MEETING DATE:** Tuesday, April 2, 5:30 before Guild Meeting  
**CONTACT PERSON:** Winnie Fleming winnief@juno.com  
**NUMBER OF SETS:** 4 BLACK with white and 4 WHITE with black (corner triangles may be repeated several times)  
**PINNED GROUPS TO TRADE:** 13 pinned groups each consisting of 4 black/white and 4 white/black  
**FABRICS:** BLACKS: black background with small white design. WHITES: white background with small black design.  
**Fabrics NOT to use:** Do not use any fabrics with other colors...only use blacks and whites. No tan or dark creme backgrounds. No solids or fabrics that read solid once sewn. No greys.

### Sew 'n Flip Rectangles



2 1/2" x 10" finished

**Yardage needed:** Small triangles (B) may be repeated several times in different combinations but not in the same block.

**BLACK :** A - 1/3 yard (4 different fabrics)  
B - 1/8 yard or Fat Quarters (at least 8 - 16 different fabrics)

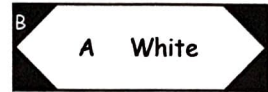
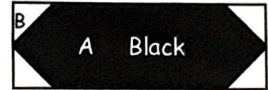
**White:** A - 1/3 yard (4 different fabrics)  
B - 1/8 yard or Fat quarters (at least 8 - 16 different fabrics)

Instructions for ONE SET of 13 blocks : (repeat 4 times with BLACK/white and 4 times with WHITE/black)

Cut the following:

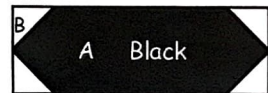
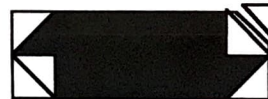
A - cut 1 - 10 1/2" strip, subcut 13 - 3" x 10 1/2" rectangles

B - 4 different fabrics - cut 1 - 1 3/4" strip, subcut 13 - 1 3/4" squares from each fabric for a total of 52 squares (additional squares from remaining strips can be used in other sets)



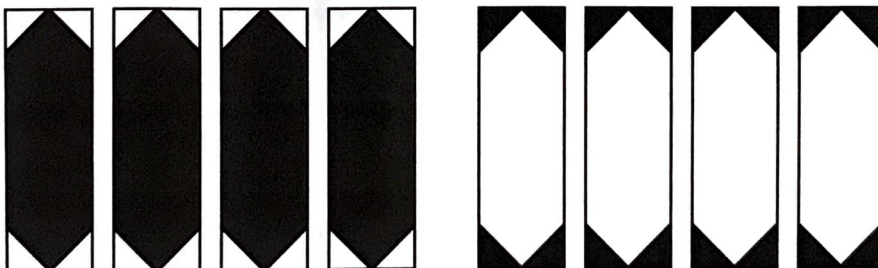
Piecing Order:

1. First, draw a diagonal line on the backside of all B 1 3/4" squares.
2. Place a B square over one corner of A, right sides together. Pay attention to the direction of the diagonal line according to the drawing. Stitch ON the diagonal line.
3. Trim excess 1/4" from stitch line. Press triangle outward. (Always stitch, trim and press before adding the next triangle.)
4. Repeat for all corners of A. Rectangle should measure 3" x 10 1/2".  
The drawing doesn't show it but the triangles will have a 1/4" overlap for perfect points.



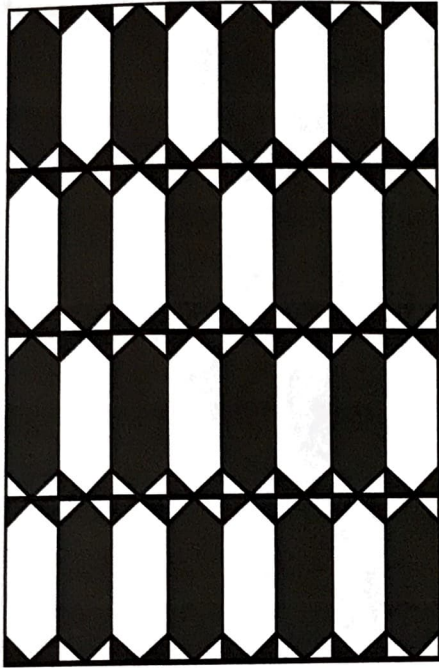
make 13

One Pinned Group: (It's ok to repeat B triangles but not in a block)

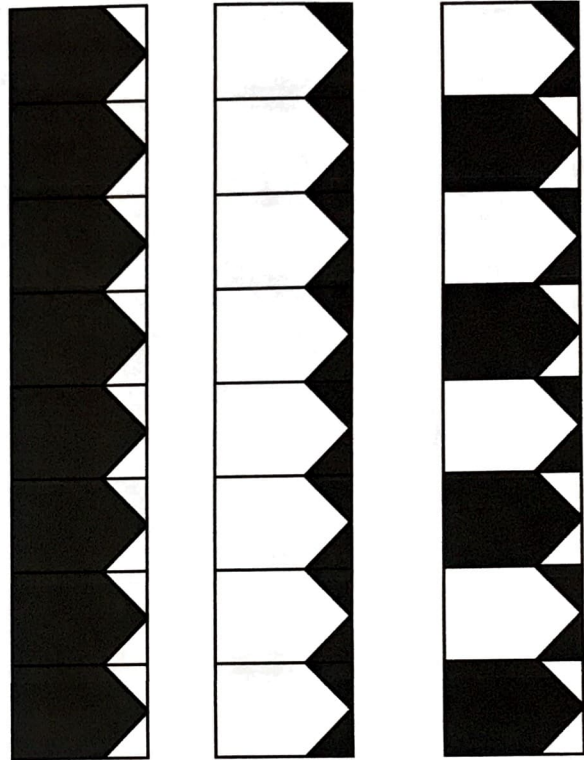


This unit offers many setting options:

1. Alternated units for quilt center:



2. Cut rectangle in half and use for borders:



3. Sashing around 10" blocks:

