

# Bay Area Quilt Guild Scrap Exchange

## General Instructions

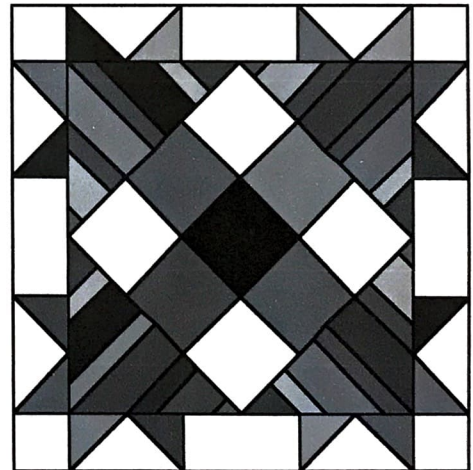
1. Use only good quality 100% cotton fabric and thread. Pre-wash all fabric.
2. Seams must be an accurate 1/4" - please measure your own blocks in stages and the completed blocks before turning in.
3. If you choose to make more sets than the minimum required per instructions, each new set must be done in different fabrics. label additional pinned groups as # 2.
4. No duplicates in a pinned groups unless stated in the instructions.
5. No IOU's.
6. Press blocks from the back first to make sure seam allowances are going the correct direction, then press the front to check for accuracy of points. Trim all threads and clip all nubs. Do NOT trim the block or square it up.
7. Pin blocks into groups according to instructions and label each pinned group with your name and phone number. Place labeled pinned groups in a large baggie and label the outside with your name, phone number and number or groups traded. Remember one pinned group per person goes to the Guild.
8. If you stitch blocks to trade together instead of pinning, please use only 2 or 3 large basting stitches. Do Not stick name labels to blocks, please use pins or basting stitch.

TERMINOLOGY: SET - all blocks from the same fabrics

PINNED GROUP - one block from each SET for maximum variety - no repeats

**BLOCK SIZE:** 12" finished block (12 1/2" unf.)  
**DUE DATE:** Tuesday, May 13, 2014, Fabrics Etc box  
**MEETING DATE:** Thursday, May 22, 7pm, Fabrics Etc  
**CONTACT PERSON:** Winnie Fleming winnief@juno.com  
**NUMBER OF SETS:** 2 sets of 16 blocks, 240 flying geese and 16 strip sets for borders  
**PINNED GROUPS TO TRADE:** 16 pinned groups each consisting of 2 - 12" f. Turkey Track blocks, 15 - 1 1/2" x 3" f. Flying Geese and 1 - 3 1/2" x 13" strippy set  
**FABRICS:** SCRAPPY REDS- anything, except novelties, medium to dark REDS. Must read as a RED (85%). ok to have other little bit of color. VARIETY of shades from medium to dark., true red, orangy or burgundy reds ok. No light backgrounds.  
LIGHTS - muslin, tan or creme shirting, anything neutral with light background and a little design /color (must be 85 - 90 % light) Can be tone on tone.  
**FABRICS NOT TO USE:** No REDS with light background or novelties. No dark tans for LIGHTS. See blocks on the guild's website.

## Turkey Tracks



12" finished ( 12 1/2" unf.)

Source of Inspiration: Bonnie Hunter's book, "String Fling", p. 67, Talkin' Turkey.

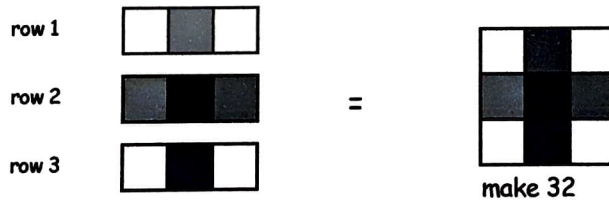
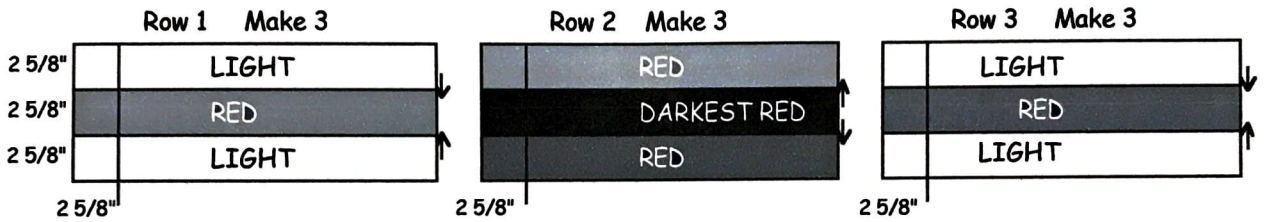
Fabrics may be repeated but try to limit repeats in a block, (try to use in a different position). All pieces traded should be as scrappy as possible.

Make the following for 32 - 12" finished Turkey Track blocks : (all units do not have to be identical). PLEASE READ ALL INSTRUCTIONS FIRST.

1. Make 32 - 9 Patches - 6 3/8" finished ( 6 7/8" unf.)

REDS - cut 12 different- 2 5/8" strips  
 DARKEST RED (center)- cut 3 - 2 5/8" strips  
 LIGHTS - cut 12 different - 2 5/8" strips

Make 3 strip sets of each row, (each fabric should be different). Arrows indicate pressing directions. Then subcut 32 - 2 5/8" segments for each row. Sew rows together according to the diagram for 32 - 9 patch blocks.

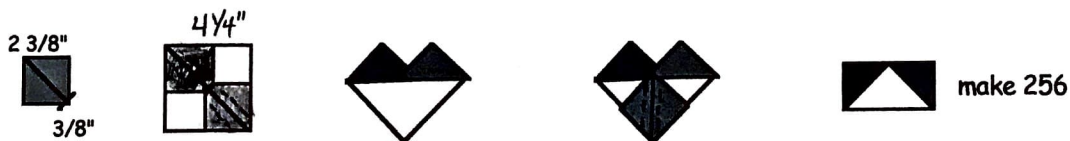


2. Make 256 - 1 1/2" x 3" finished FLYING GEESE for blocks. Make at least 8 different fabric combinations.

Cut the following:

LIGHTS - 8 different fabrics - cut 8 - 4 1/4" squares from each fabric  
 REDS - cut a total of 256 - 2 3/8" squares ( at least 16 different fabrics - cut 16 - 2 3/8" squares of each)

Draw a diagonal line on the backside of all RED 2 3/8" squares. Pre-nub 3/8" from one corner of each RED square by measuring along the drawn line to the tip of the square. Place 2 red squares right sides together on opposite corners of a LIGHT square. Stitch 1/4" on both sides of the drawn diagonal line. Cut on the line and press triangles outward. Place another RED square on the LIGHT corner and stitch 1/4" on both sides of the drawn line. Press outward and clip nubs. Repeat and make 256 flying geese.



6. Flying Geese for Borders: Make 240 - 1 1/2" x 3" finished units. Make at least 4 different combinations.

Cut the following:

REDS - cut 60 - 4 1/4" squares (use at least 4 different fabrics - 15 squares of each)

LIGHTS - cut 240 - 2 3/8" squares (use at least 16 different fabrics, 15 squares of each)

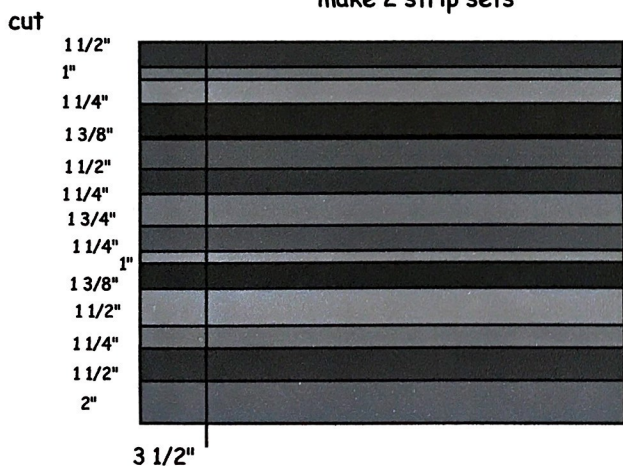
Following the same piecing order from Step 2 and make 240 opposite flying geese units.



7. Strippy strips for Borders:

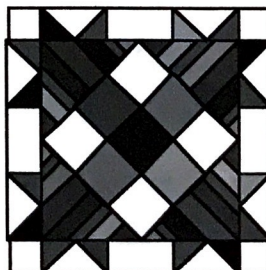
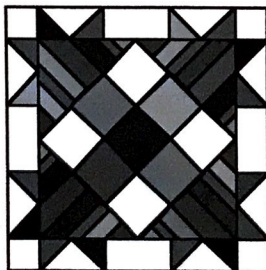
Make 2 strip sets (at least 10 different strips each) approximately 13" wide by sewing a variety of RED strips side by side. Strips should vary in width ranging from 1" to - 2 1/4". Press to one side, then cut 16 - 3 1/2" segments.

one example:



You will need additional light strips and red squares for sashing and borders for your quilt.

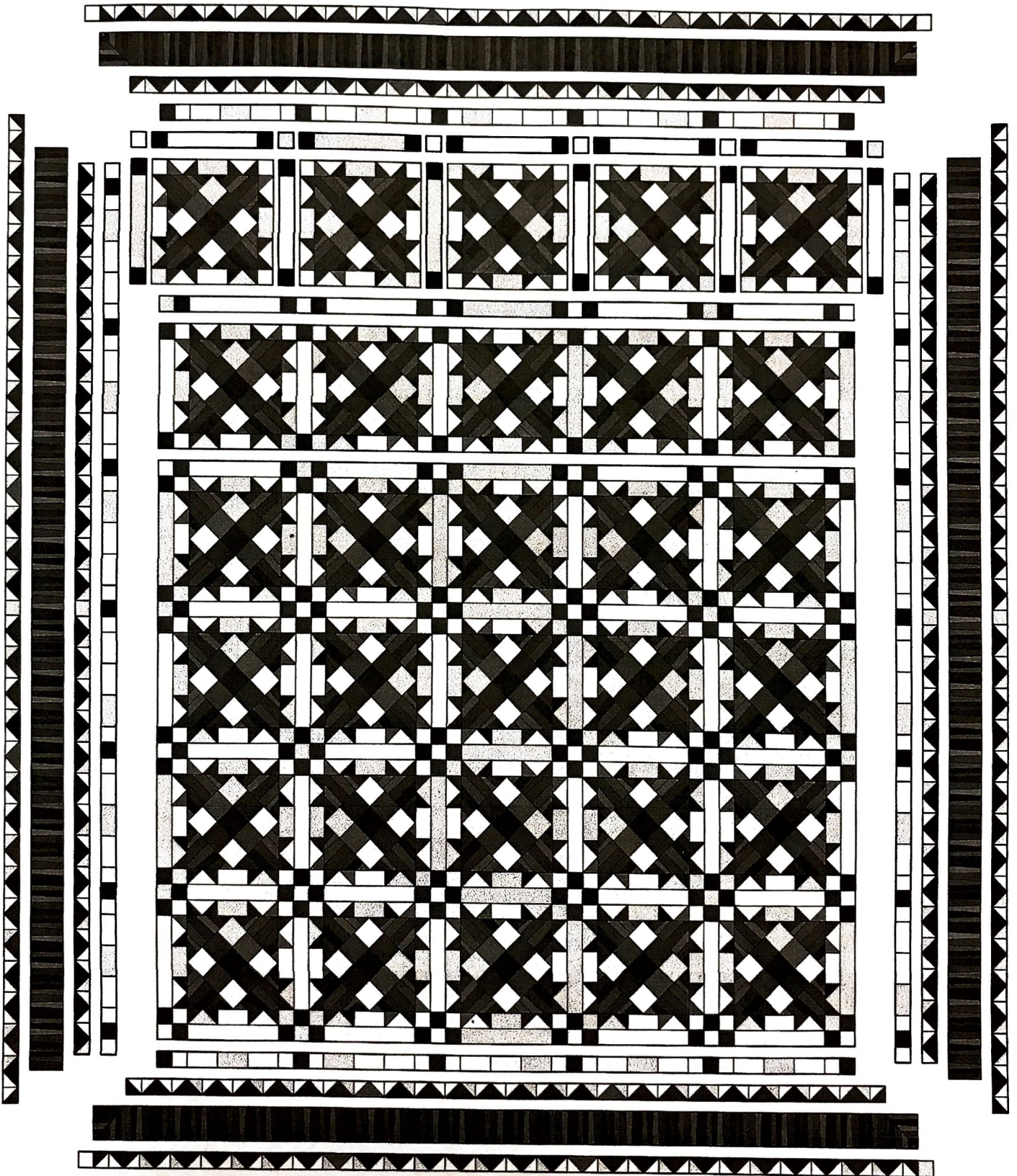
One Pinned Group:



3 1/2" x 13"



**ASSEMBLY DIAGRAM**

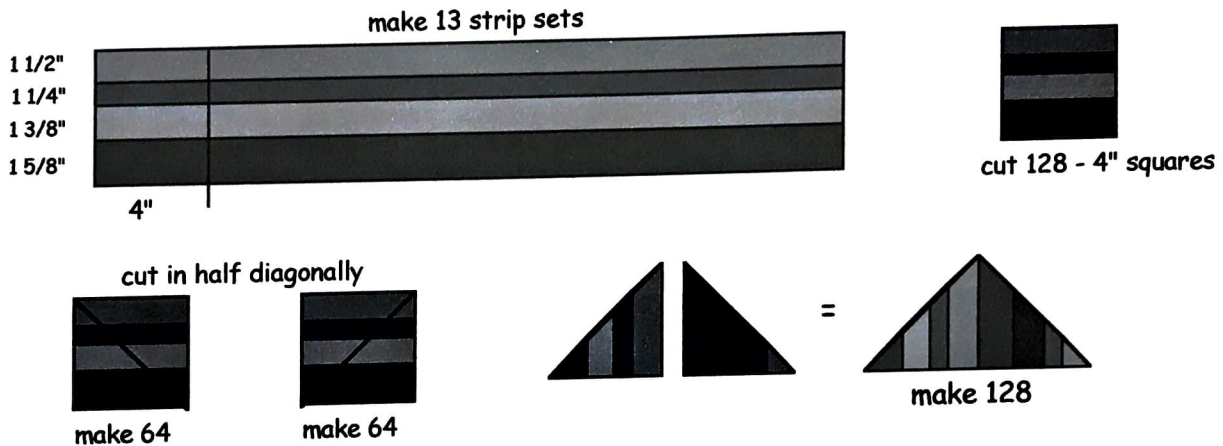


### 3. Strip Triangles - make 128 triangles

Cut 13 RED strips of each width:  $1\frac{5}{8}$ ",  $1\frac{1}{2}$ ",  $1\frac{3}{8}$ ",  $1\frac{1}{4}$ ". Some REDS may be repeated.

Make 13 different strip sets. Each strip set will have 4 different REDS and should total at least 4" wide.

Sew RED strips side by side ( $1\frac{5}{8}$ ",  $1\frac{1}{2}$ ",  $1\frac{3}{8}$ " and  $1\frac{1}{4}$ ") in random order and make 13 different strip sets. Press to one side (light spray sizing maybe used since edges of triangles will be bias.) Next, subcut 128 - 4" squares (trim down one side if strip set is larger than 4"). Cut squares in half diagonally according to the diagram. Then sew 2 different triangles together for 128 triangles. Any leftover strips may be used for the border strips - step 7.



### 4. Cut the following LIGHT squares and rectangles:

Cut 128 - 2" squares (at least 4 different fabrics - 32 squares of each) approximately 7 - 2" strips total

Cut 128 - 2" x 3 1/2" rectangles (at least 4 different fabrics - 32 rectangles of each) approximately 7 - 3 1/2" strips total

5. Sew Turkey Track blocks together. First, sew strippy triangles to opposite sides of the 9 patch block, press, then sew strippy triangles to the other side. Sew LIGHT 2" squares, 2" x 3 1/2" rectangles and flying geese units into rows according to the diagrams. Then sew around the center 9 patch with strippy triangles according to the diagram.

