

# Bay Area Quilt Guild Scrap Exchange

## General Instructions

1. Use only good quality 100% cotton fabric and thread. Pre-wash all fabric.
2. Seams must be an accurate 1/4" - please measure your own blocks in stages and the completed blocks before turning in.
3. If you choose to make more sets than the minimum required per instructions, each new set must be done in different fabrics. Label additional pinned groups as # 2.
4. No duplicates in a pinned groups unless stated in the instructions.
5. No IOU's.
6. Press blocks from the back first to make sure seam allowances are going the correct direction, then press the front to check for accuracy of points. Trim all threads and clip all nubs. Do NOT trim the block or square it up.
7. Pin blocks into groups according to instructions and label each pinned group with your name and phone number. Place labeled pinned groups in a large baggie and label the outside with your name, phone number and number or groups traded. Remember one pinned group per person goes to the Guild.
8. If you stitch blocks to trade together instead of pinning, please use only 2 or 3 large basting stitches. Do Not stick name labels to blocks, please use pins or basting stitch.

TERMINOLOGY: SET - all blocks from the same fabrics

PINNED GROUP - one block from each SET for maximum variety - no repeats

**BLOCK SIZE:** 10 1/2" finished (11" unf.)  
**DUE DATE:** Tuesday, March 19, 2013, Fabrics Etc. box  
**MEETING DATE:** Thursday, March 28, 7pm, Fabrics Etc.  
**CONTACT PERSON:** Winnie Fleming winnief@juno.com  
**NUMBER OF SETS:** 3 sets of 10 blocks each plus 3 different border strip sets

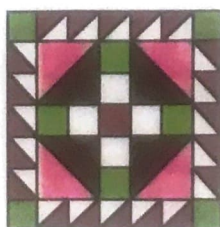
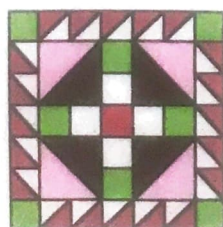
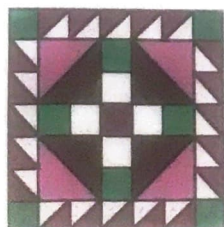
**PINNED GROUPS TO TRADE:** 10 pinned groups, each consisting of 3 different blocks and 3 different 10" border strip sets

**FABRICS:** Civil War Reproduction prints - REDS, PINKS, GREENS, BROWNS and light creme shirtings. All prints may have a small amount of other colors but must "read" that particular color. Each block uses 1 red, 1 pink, 1 green, 1 brown and 2 different shirtings. Each border strip set uses 2 different browns, 2 different pinks and 1 green.

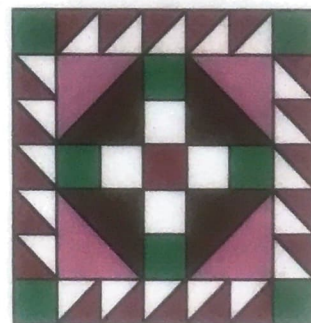
**FABRICS NOT TO USE:** No solids, nothing but Civil War Reproduction fabrics from the late 1880's. No blues, yellows, oranges, purples.

Source of Inspiration: Bonnie Hunter's book - Strip Fling, p 52.

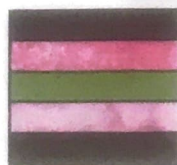
One pinned group:



### Cotton Ball



10 1/2" finished




10"

Instructions for 1 SET of 10 blocks: (repeat 3 times for 30 blocks)

 shirting # 1  
make 200 - 1 1/2" f.

Use 1 1/2" finished Triangles on a Roll or Thangles (or cut 2 3/8" squares) and make 200 half square triangle uses with SHIRTING # 1 and RED. Press toward the RED.


 brown  
pink  
make 40 - 3" f.

Use 3" finished Triangles on a Roll or Thangles (or cut 3 7/8" squares) and make 40 half square triangles with PINK and BROWN. Press toward the BROWN.

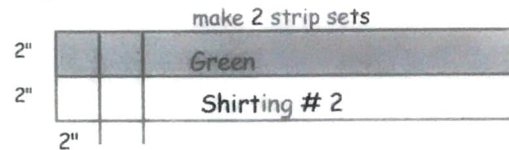
Red - Cut 1 - 2" strip, subcut 10 - 2" center squares

Shirting # 2 - Cut 2 - 2" strips

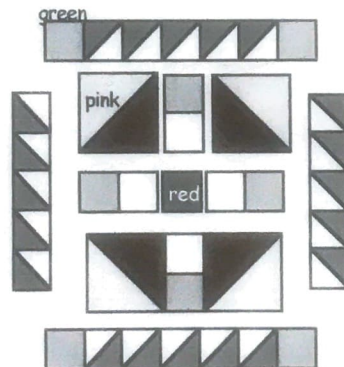
Green - Cut 4 - 2" strips. Use 2 strips and subcut 40 - 2" corner squares (remaining 2 strips to be paired with shirting # 2)

 Green  
Shirting # 2  
make 40

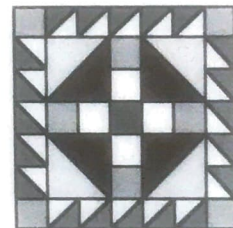
Make 2 strip sets by sewing Shirting # 2 and Green 2" strips side by side. Subcut 40 - 2" segments.



Sew blocks together according to the diagram. Make 10 blocks:



=



make 10 - 10 1/2" f.

Border Units - trade a large 10" strip set to be subcut later: Make 3 border strip sets (repeat 3 times). You will get 4 - 10" cuts from 1 strip set.

2 different BROWNS - cut 3 - 2" strips of each

2 different PINKS - cut 3 - 2" strips of each

1 GREEN - cut 3 - 2" strips

Sew 2" strips together side by side according to the diagram. Press to 1 side. Subcut 10 - 10" segments. (Border units will be subcut into 2" segments AFTER traded for a scrappy border).

