

Bay Area Quilt Guild Scrap Exchange

General Instructions

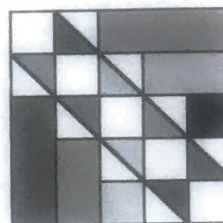
1. Use only good quality 100% cotton fabric and thread. Pre-wash all fabric.
2. Seams much be an accurate 1/4" - please measure your own blocks in stages and the completed blocks before turning in.
3. If you choose to make more sets than the minimum required per instructions, each new set must be done in different fabrics. label additional pinned groups as # 2.
4. No duplicates in a pinned groups unless stated in the instructions.
5. No IOU's.
6. Press blocks from the back first to make sure seam allowances are going the correct direction, then press the front to check for accuracy of points. Trim all threads and clip all nubs. Do NOT trim the block or square it up.
7. Pin blocks into groups according to instructions and label each pinned group with your name and phone number. Place labeled pinned groups in a large baggie and label the outside with your name, phone number and number or groups traded. Remember one pinned group per person goes to the Guild.
8. If you stitch blocks to trade together instead of pinning, please use only 2 or 3 large basting stitches. Do Not stick name labels to blocks, please use pins or basting stitch.

TERMINOLOGY: SET - all blocks from the same fabrics

PINNED GROUP - one block from each SET for maximum variety - no repeats

BLOCK SIZE: 10" finished (10 1/2" unf.)
DUE DATE: TUESDAY, January 15, 2013, Fabrics Etc box
MEETING DATE: Thursday, Jan 24, 7pm, Fabrics Etc.
CONTACT PERSON: Winnie Fleming winnief@juno.com
NUMBER OF SETS: 3 SETS of 16 blocks each for a total of 48 blocks
PINNED GROUPS TO TRADE: 16 pinned groups, each consisting of 3 different blocks
FABRICS: MEDIUM TO DARK Civil War Reproduction prints (late 1800s)- variety in scale, etc. Each medium/dark print will be different with no repeats per block. TAN - tone on tone - same tan per block, can have small print but no other color. Civil War prints may be repeated in the other blocks but not in the same position. Do not repeat the TANS.
FABRICS NOT TO USE: NO SOLIDS, no batiks or anything other than Civil War Reproduction prints

Logs and Ladders



10" finished

Source of Inspiration: Fons & Porter's Scrap Quilts Magazine, Summer 2012, p55.

Yardage needed for 1 SET - 16 blocks (repeat 3 times)

Each set of blocks uses 14 different Medium/Dark Civil War reproduction prints - 1/4 to 1/3 yd each (Fat Quarters or large scraps will work).

TAN - 1 1/3 yds

Instructions for 1 SET of 16 blocks: (repeat a total of 3 times for 48 blocks)

2" f.



8 sets of 16

Use the same TAN with different Medium/Dark Prints and make 8 different combinations, 16 - 2" finished (2 1/2" unf.) Half Square Triangle units of each combination. Use 2" Finished HST Papers on a Roll, or Thangles, OR cut squares 2 7/8" and cut squares in half diagonally for individual triangles. Press toward the print and clip nubs.

Cut the following:

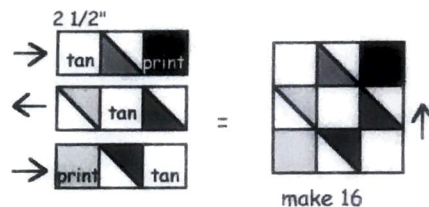
MEDIUM/DARK PRINTS :

- Cut 2 different 6 1/2" strips, subcut 16 - 2 1/2" x 6 1/2" logs of both fabrics
- Cut 2 different 4 1/2" strips, subcut 16 - 2 1/2" x 4 1/2" logs of both fabrics
- Cut 2 different 2 1/2" strips, subcut 16 - 2 1/2" squares of both fabrics

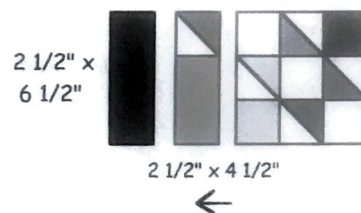
TAN - Cut 5 - 2 1/2" strips, subcut 80 - 2 1/2" squares

Piecing Order:

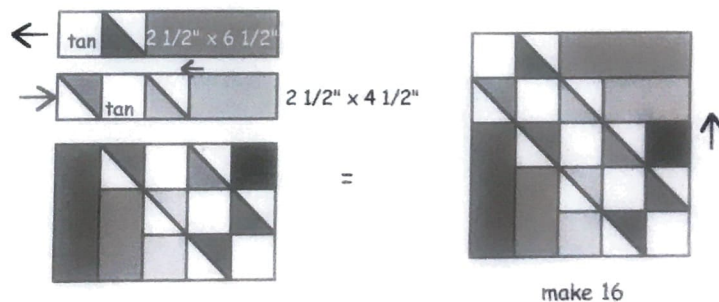
1. First, make 16 smaller blocks by sewing squares and HST into rows, then join rows according to the diagram. Arrows indicate pressing directions.



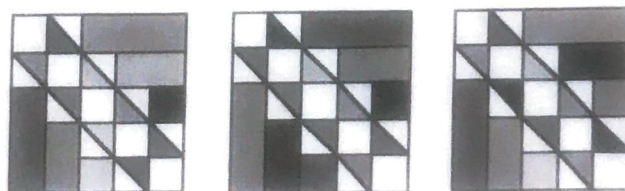
2. Sew HST to the end of 16 - 2 1/2" x 4 1/2", next sew a row to the LEFT of the block. Then sew a 2 1/2" x 6 1/2" log to each block according to the diagram.



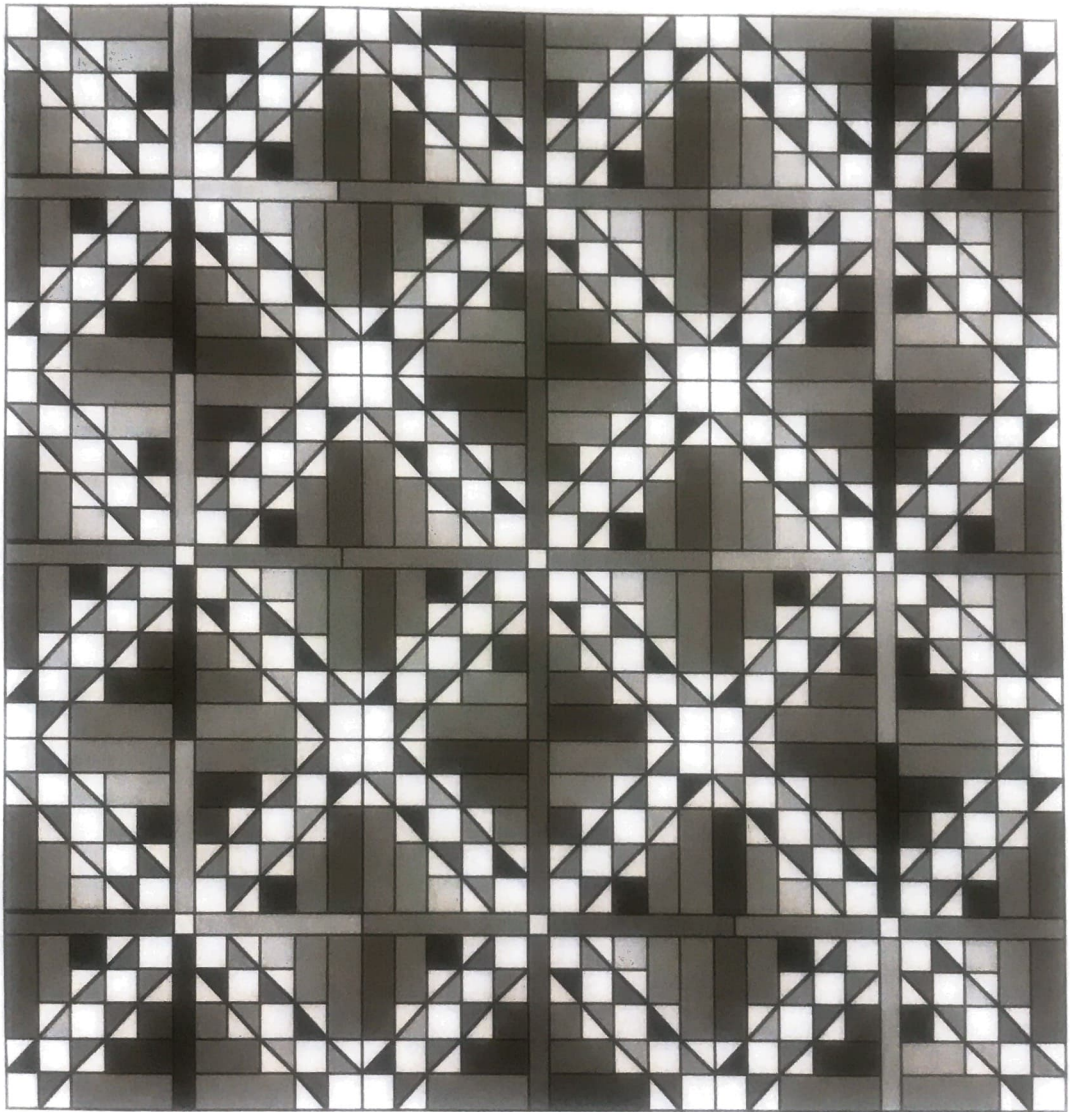
3. Sew squares, HST and logs together for 2 rows, then sew rows to the top of each block according to the diagram.



One Pinned Group:



One Suggested Setting:





ATHERPINGS

DIO for

J. FABRICS

ICS.COM