

# Bay Area Quilt Guild Scrap Exchange

## General Instructions

1. Use only good quality 100% cotton fabric and thread. Pre-wash all fabric.
2. Seams must be an accurate 1/4" - please measure your own blocks in stages and the completed blocks before turning in.
3. If you choose to make more sets than the minimum required per instructions, each new set must be done in different fabrics. label additional pinned groups as # 2.
4. No duplicates in a pinned groups unless stated in the instructions.
5. No IOU's.
6. Press blocks from the back first to make sure seam allowances are going the correct direction, then press the front to check for accuracy of points. Trim all threads and clip all nubs. Do NOT trim the block or square it up.
7. Pin blocks into groups according to instructions and label each pinned group with your name and phone number. Place labeled pinned groups in a large baggie and label the outside with your name, phone number and number or groups traded. Remember one pinned group per person goes to the Guild.
8. If you stitch blocks to trade together instead of pinning, please use only 2 or 3 large basting stitches. Do Not stick name labels to blocks, please use pins or basting stitch.

TERMINOLOGY: SET - all blocks from the same fabrics

PINNED GROUP - one block from each SET for maximum variety - no repeats

BLOCK SIZE: 4 1/2" finished ( 5" unfn.)  
 DUE DATE: Tuesday, July 17, Fabric Etc box  
 MEETING DATE: Thursday, July 26, Fabric Etc, 7pm  
 CONTACT PERSON: Winnie Fleming winnief@juno.com  
 NUMBER OF SETS: 7 sets of 20 blocks (140 9-patches)  
 1 set of 20 half blocks  
 PINNED GROUPS TO TRADE: 20 pinned groups, each consisting  
 of 7 different 9-patches and 1 half block  
 FABRICS: ANYTHING - maximum, scrappy variety -  
 large, small prints, variety of color and texture. - Kids prints, batiks,  
 reproductions, patriotic, etc. Limit the amount of lights.  
 FABRICS NOT TO USE: No solids

## 9 Patch Rick Rack



4 1/2" finished

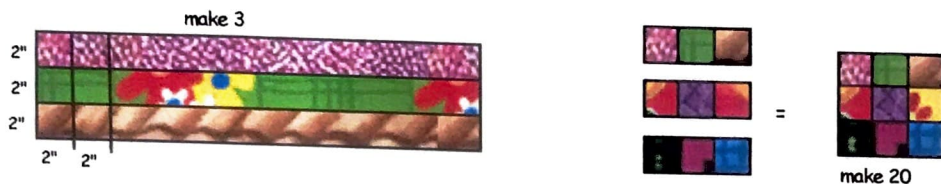
Each 9-patch should have 9 different fabrics in random order - do not organize by placing a light next to a dark. Do not coordinate the fabrics per set - GO SCRAPPY. Fabrics may be repeated(only once) in other sets with different fabric combinations.

One Pinned  
Group:



Instructions for 1 SET of 20 blocks: (repeat a total of 7 times for 140 blocks)

1. Cut 9 different 2" strips (maximum variety of print and color)
2. Make 3 different strip sets by sewing 3 strips side by side. Press to one side. Subcut 20 - 2" segments from each strip set. Then sew 9-patches together by rows according to the diagram. Make 20 - 4 1/2" finished blocks (5" unf.)



Instructions for HALF blocks - make 1 set of 20 blocks

1. Cut 1 - 2" strip from 3 different fabrics. Use 1 strip and subcut 20 - 2" squares
2. Cut 1 - 3 3/8" strips from 3 different fabrics, subcut 5 - 3 3/8" squares from all 3 fabrics, then cut squares in half diagonally from both directions for 20 triangles of each fabric ☒
3. Sew 2 - 2" strips side by side. Press to one side. Subcut 20 - 2" segments.
4. Sew half blocks together by rows according to the diagram. Make 20.



Inspired by Bonnie Hunter's book, Adventures with Leaders & Enders, Rick Rack Nines, P.35.

Fabric Needed:

66 - 2" strips ( 63 for 9-patches and 3 for half blocks)

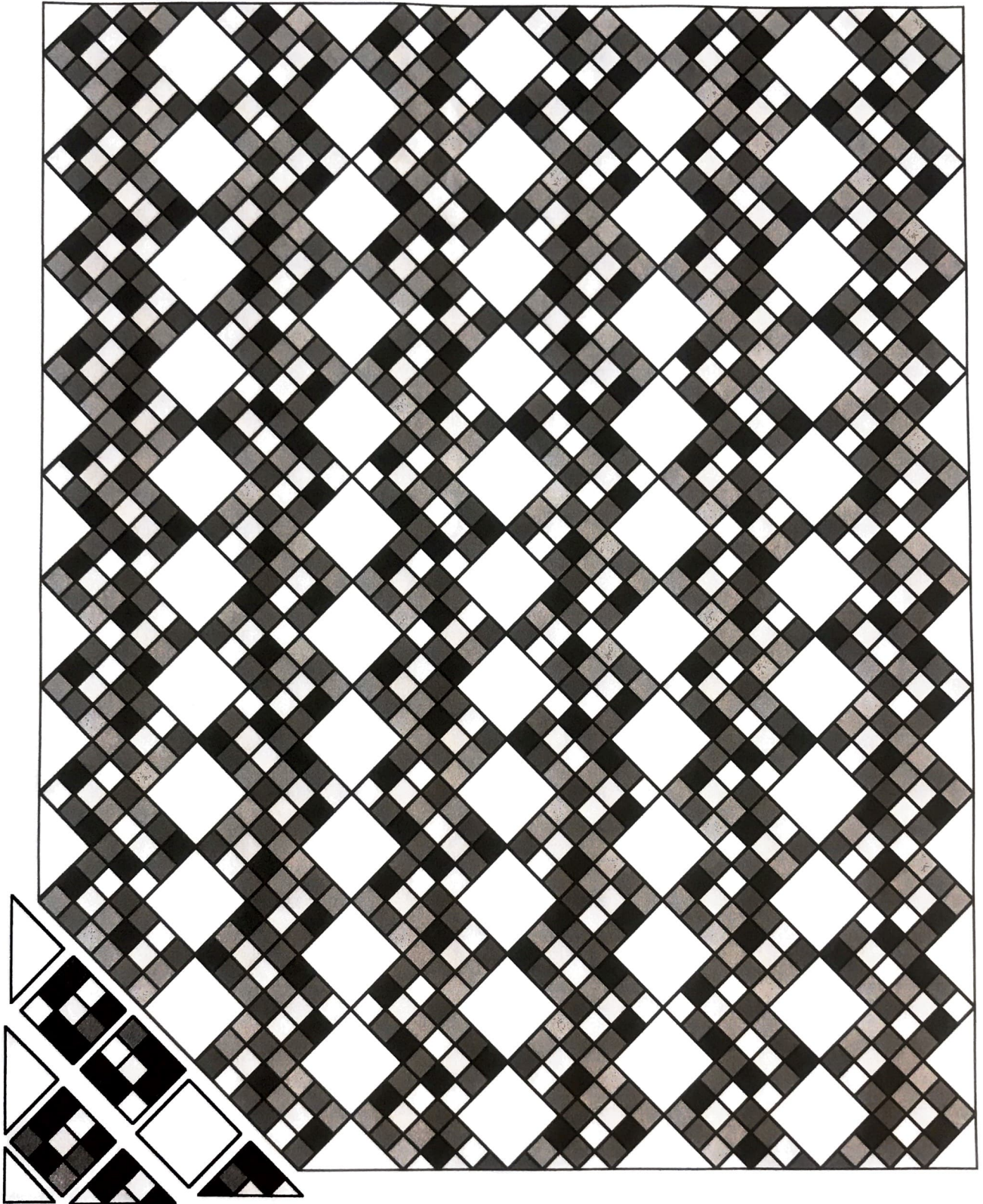
3 different 3 3/8" strips (half blocks)

BACKGROUND fabric needed for optional setting - approx. 57" x 71" without borders (see page 3): 1 3/4 yds (NOT TRADED)

Cut 7 - 5" strips, subcut 53 - 5" squares

Cut 2 - 7 5/8" strips, subcut 6 - 7 5/8" squares, cut in half diagonally from both directions for 24 side triangles ☒

Cut 2 - 4 1/8" squares, cut in half diagonally for 4 corner triangles ☒



approx. 57" x 71" (126 blocks and 12 half blocks)